

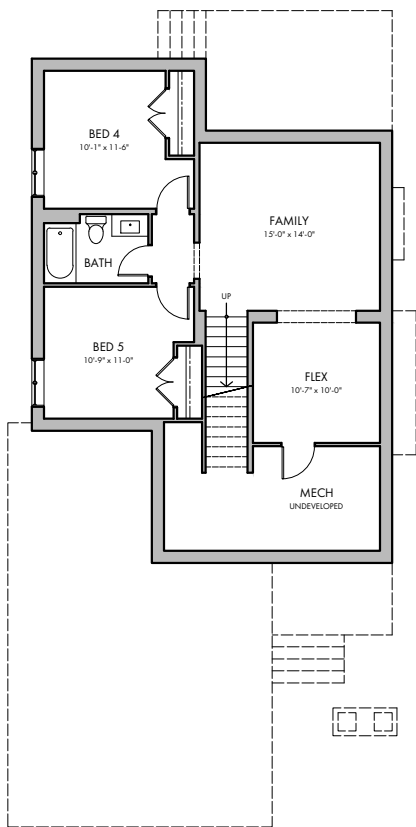
# THE FILLMORE 3

## 309 COOPERSFIELD RISE

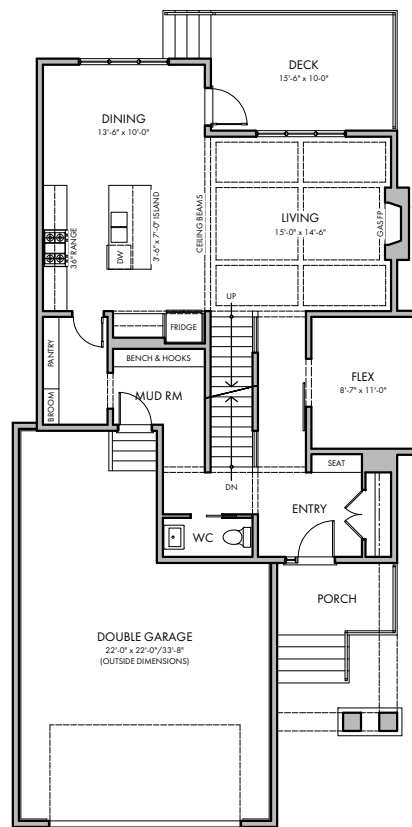
- 2,366 FT<sup>2</sup> TWO-STOREY HOME - LEVEL LOT -
- DOUBLE GARAGE WITH EXTENDED BAY-
- 9' BASEMENT & MAIN FLOOR - 8' UPPER FLOOR -
- OPEN LIVING, KITCHEN, & DINING AREAS -
- MAIN FLOOR OFFICE - WALK-THRU PANTRY -
- LARGE REAR DECK - BUILT-INS IN MUD ROOM -
- 3 UPPER FLOOR BEDROOMS & BONUS ROOM -
- VAULTED CEILING IN PRIMARY BEDROOM -
- 5 PIECE ENSUITE AND WALK-IN CLOSET -
- LARGE UPPER FLOOR LAUNDRY - SPLIT BATHROOM -
- LARGE BASEMENT FAMILY ROOM & FLEX AREA -
- 2 BASEMENT BEDROOMS WITH BATHROOM -



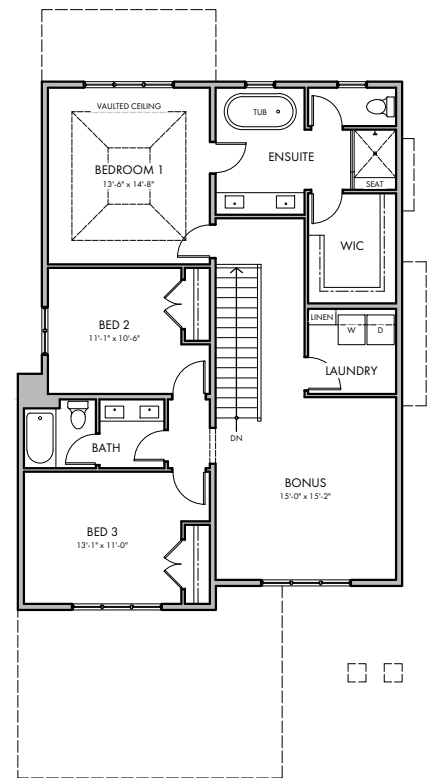
FRONT ELEVATION  
- TUDOR STYLE -



BASEMENT  
755 FT<sup>2</sup>



MAIN FLOOR  
1,081 FT<sup>2</sup>



UPPER FLOOR  
1,285 FT<sup>2</sup>

HARDER HOMES LTD.  
P.O. BOX 10208  
AIRDRIE, ALBERTA T4B 0H5



WWW.HARDERHOMES.CA  
SALES@HARDERHOMES.CA  
403.912.7900