

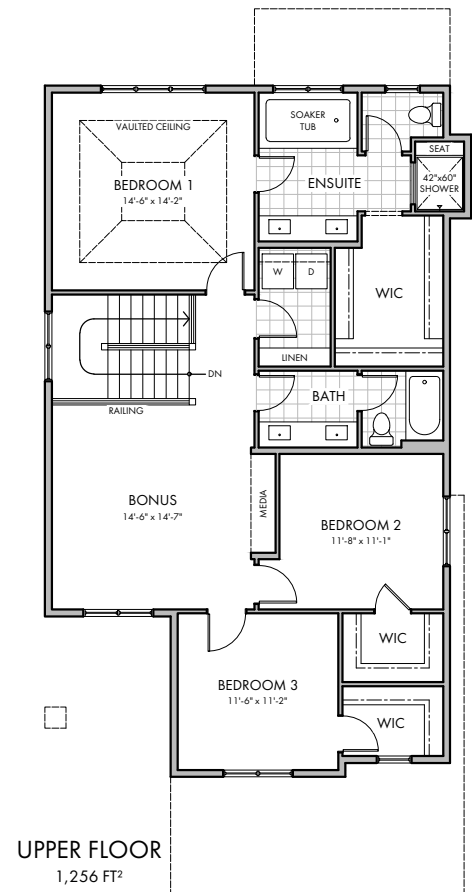
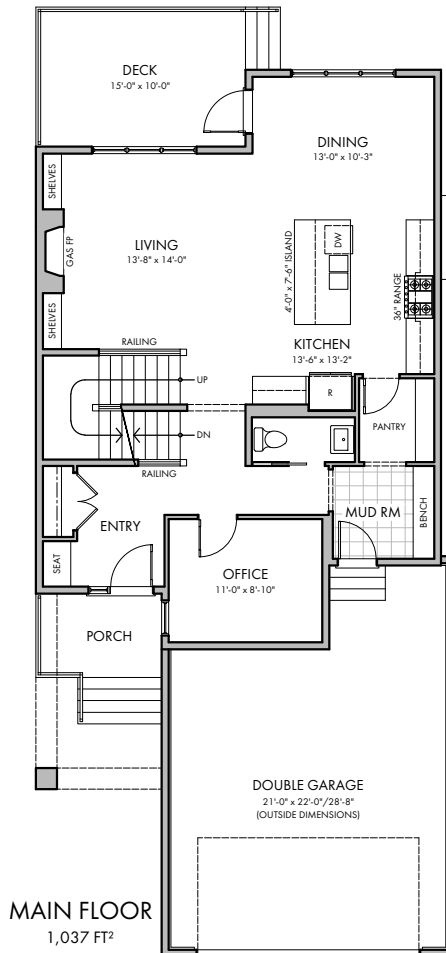
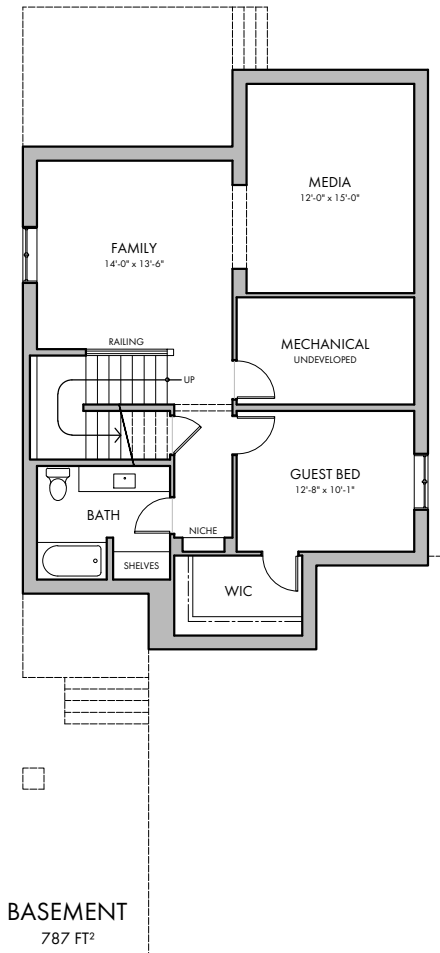
THE MADISON C

329 COOPERSFIELD RISE

- 2,293 FT² TWO-STORY HOME - DOUBLE GARAGE -
- 9' BASEMENT - 9' MAIN FLOOR - 8' UPPER FLOOR -
- MAIN FLOOR OFFICE - WALK THROUGH PANTRY -
- OPEN LIVING, KITCHEN, AND DINING AREAS -
- REAR DECK - BUILT-IN BENCH IN MUD ROOM -
- LARGE BONUS ROOM WITH MEDIA NICHE -
- LARGE BEDROOMS WITH WALK-IN CLOSETS -
- VAULTED CEILING IN BEDROOM 1 - 5 PIECE ENSUITE -
- UPPER FLOOR LAUNDRY - SPLIT UPPER BATHROOM -
- LARGE BASEMENT FAMILY AND MEDIA ROOMS -
- GUEST BEDROOM WITH WALK-IN CLOSET-



FRONT ELEVATION



HARDER HOMES LTD.
P.O. BOX 10208
AIRDRIE, ALBERTA T4B 0H5



WWW.HARDERHOMES.CA
SALES@HARDERHOMES.CA
403.912.7900