

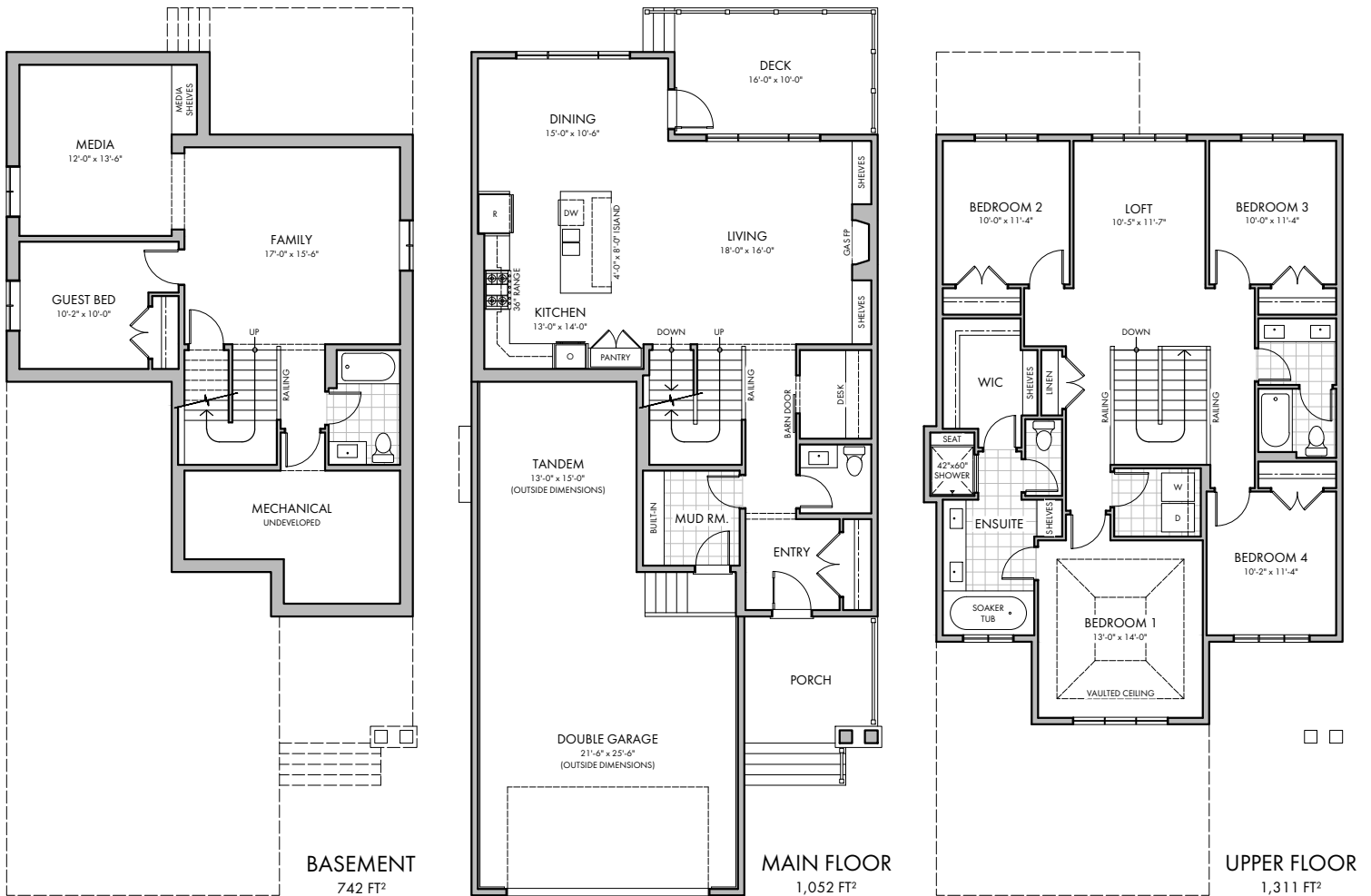
THE CRESTWOOD 3

333 COOPERSFIELD RISE

- 2,363 FT² TWO-STORY HOME -
- DOUBLE GARAGE + TANDEM BAY -
- 9' BASEMENT / 9' MAIN FLOOR / 8' UPPER FLOOR -
- TECH ROOM WITH BUILT-IN DESK -
- LARGE LIVING, KITCHEN, AND DINING AREAS -
- LARGE REAR DECK / BUILT-IN BENCH IN MUD ROOM -
- 4 UPPER FLOOR BEDROOMS AND LOFT SPACE -
- VAULTED CEILING IN BEDROOM 1 / 5 PIECE ENSUITE -
- UPPER FLOOR LAUNDRY / SPLIT UPPER BATHROOM -
- LARGE BASEMENT FAMILY AND MEDIA ROOMS -
- BASEMENT GUEST BEDROOM -



FRONT ELEVATION



HARDER HOMES LTD.
P.O. BOX 10208
AIRDRIE, ALBERTA T4B 0H5



WWW.HARDERHOMES.CA
SALES@HARDERHOMES.CA
403.912.7900