

THE MESA

337 COOPERSFIELD RISE

2,279 FT² TWO-STOREY / DOUBLE GARAGE

9' BASEMENT / 9' MAIN / 8' UPPER

MAIN FLOOR OFFICE / WALK-THROUGH PANTRY

OPEN LIVING, DINING, AND KITCHEN AREA

4 BEDROOMS ON UPPER FLOOR

BEDROOM 1 CEILING VAULT / SPACIOUS ENSUITE

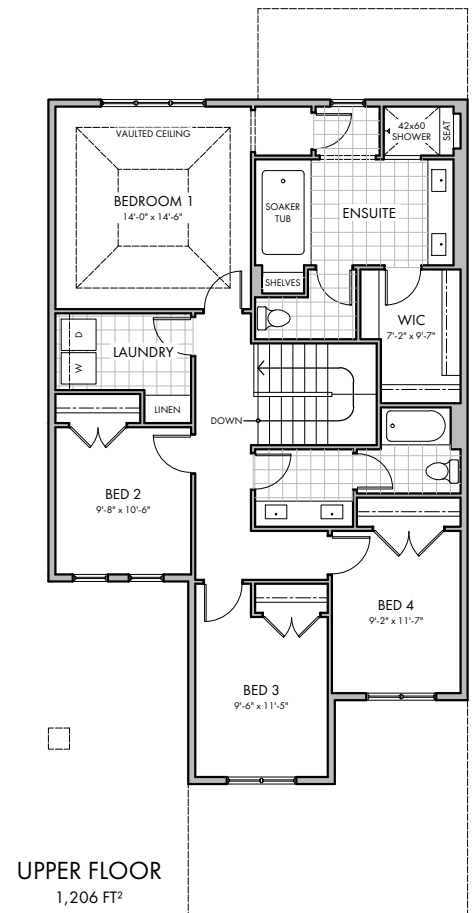
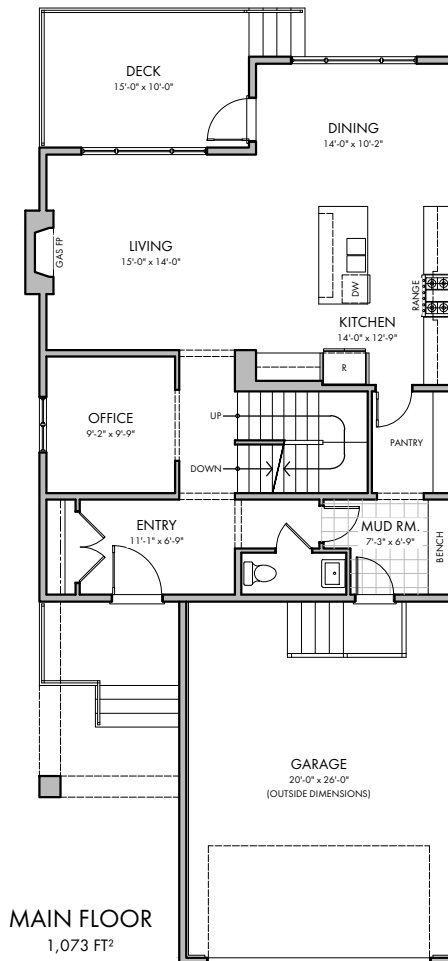
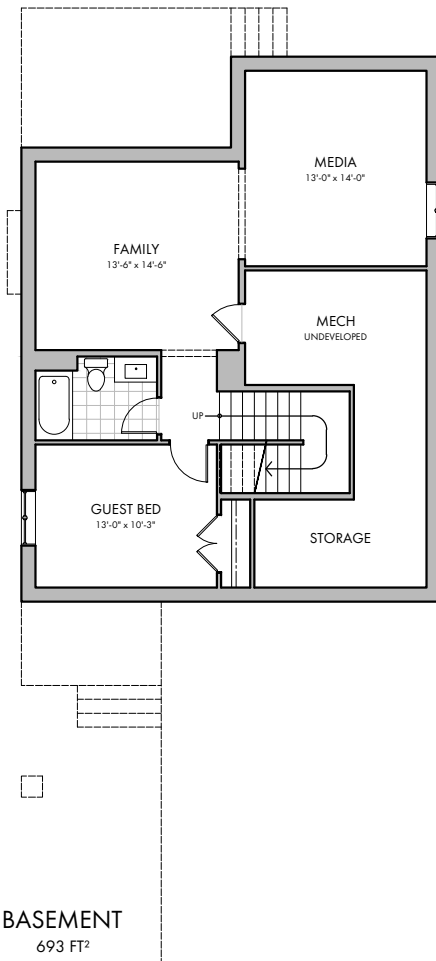
UPPER LAUNDRY / SPLIT BATHROOM

GUEST BED AND FULL BATHROOM IN BASEMENT

FULLY DEVELOPED BASEMENT



FRONT ELEVATION



HARDER HOMES LTD.
P.O. BOX 10208
AIRDRIE, ALBERTA T4B 0H5



WWW.HARDERHOMES.CA
SALES@HARDERHOMES.CA
403.912.7900