

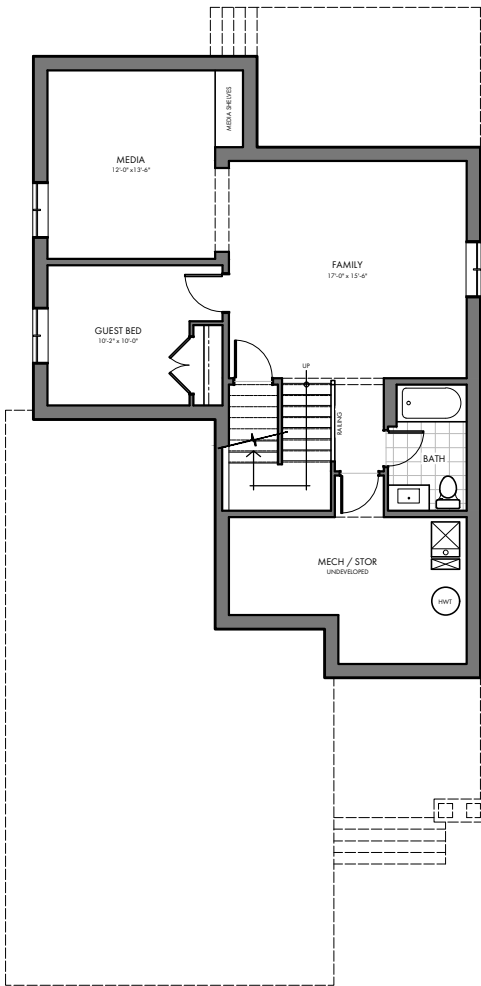
THE CRESTWOOD 3

62 COOPERSFIELD PARK

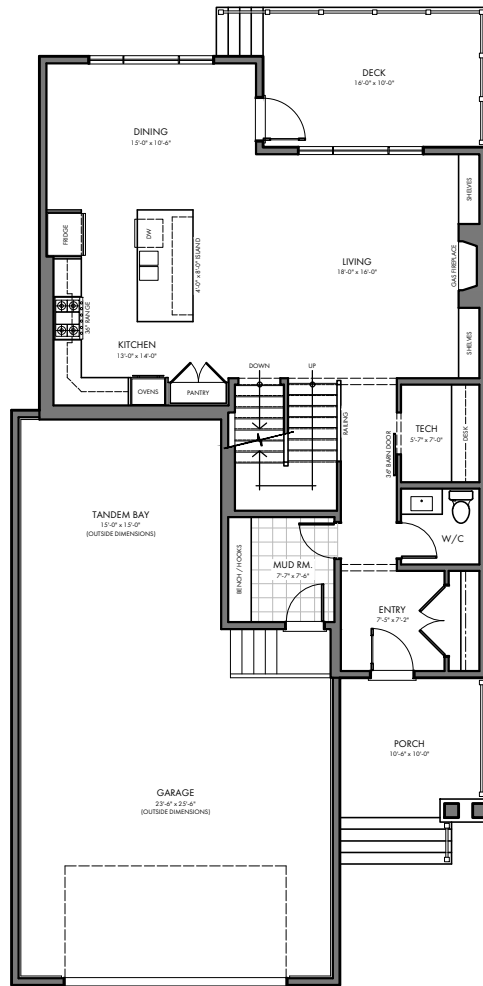
2,398 FT² TWO-STOREY / CRAFTSMAN STYLE
 OVERSIZED DOUBLE GARAGE + TANDEM BAY
 9' MAIN FLOOR & BASEMENT / 8' UPPER FLOOR
 TECH ROOM / FIREPLACE WITH BUILT-IN SHELVING
 REAR DECK / MUD ROOM WITH BUILT-IN BENCH
 4 UPPER FLOOR BEDROOMS/ UPPER FLOOR LOFT
 VAULTED CEILING IN MASTER SUITE / 5 PIECE ENSUITE
 UPPER FLOOR LAUNDRY / SPLIT UPPER BATHROOM
 LARGE BASEMENT FAMILY AND MEDIA ROOMS
 BASEMENT GUEST BEDROOM



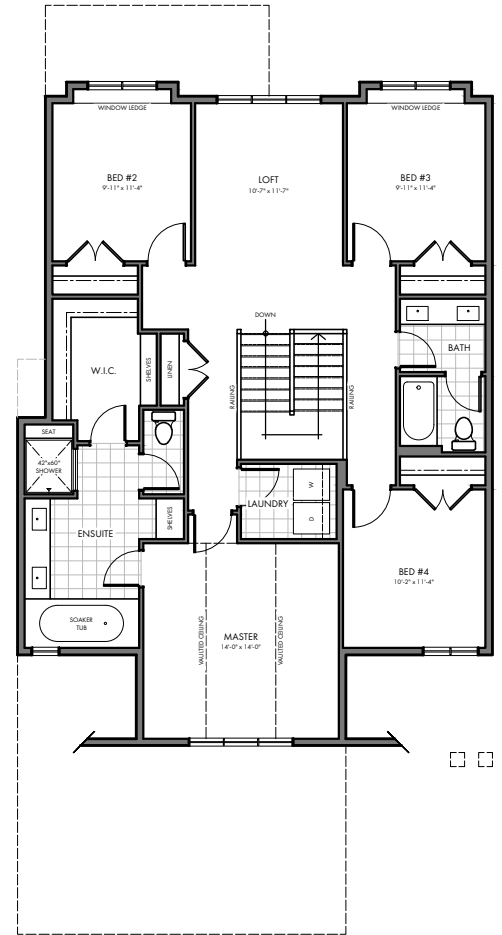
FRONT ELEVATION



BASEMENT
742 FT²



MAIN FLOOR
1,052 FT²



UPPER FLOOR
1,346 FT²

HARDER HOMES LTD.
 P.O. BOX 10208
 AIRDRIE, ALBERTA T4B 0H5



WWW.HARDERHOMES.CA
 SALES@HARDERHOMES.CA
 403.912.7900