

# THE HAYWARD 2

## 332 COOPERSFIELD RISE

2,108 FT<sup>2</sup> TWO-STOREY PRAIRIE STYLE HOUSE

9' BASEMENT / 9' MAIN / 8' UPPER

DOUBLE GARAGE WITH STORAGE / BACK DECK

MAIN FLOOR OFFICE / BUILT-INS IN MUD ROOM

OPEN LIVING, DINING, AND KITCHEN AREA

LARGE BONUS ROOM WITH MEDIA NICHE

VAULTED CEILING IN BEDROOM 1

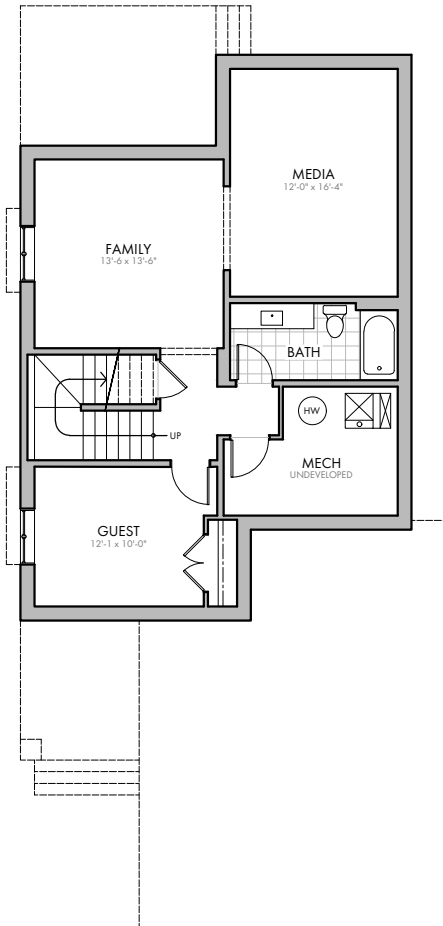
5 PIECE ENSUITE & LARGE W.I.C. / UPPER LAUNDRY

SPLIT UPPER BATHROOM / W.I.C. IN BED 3

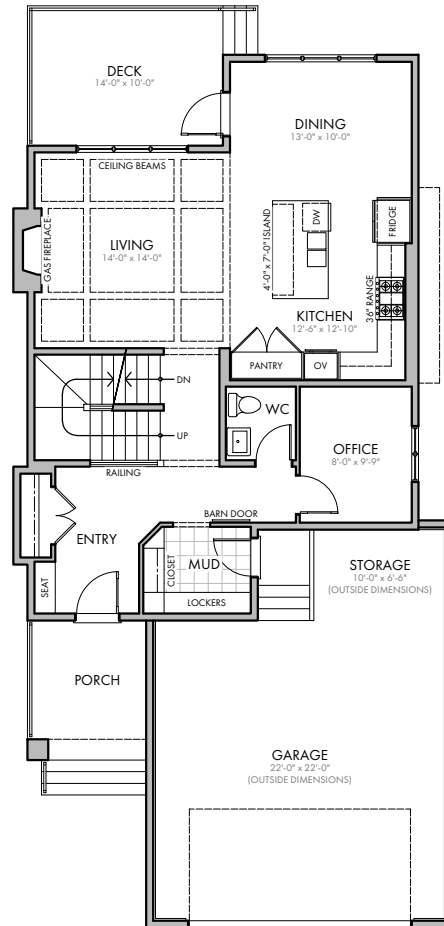
SPACIOUS BASEMENT DEVELOPMENT



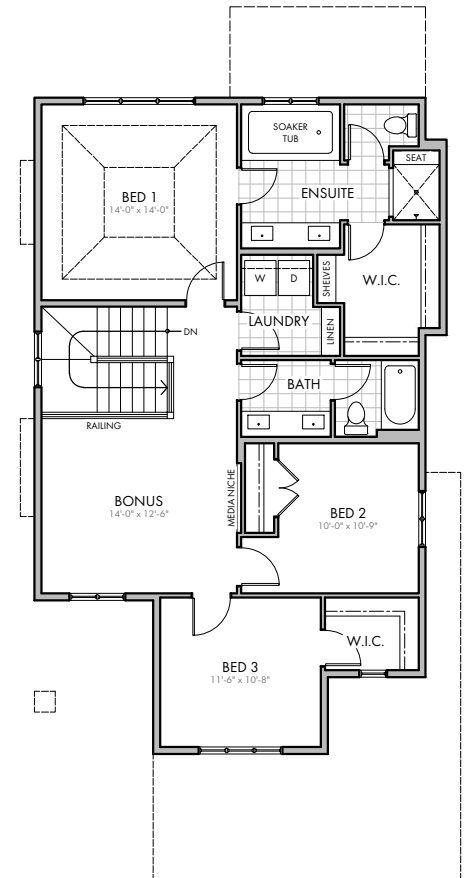
FRONT ELEVATION



BASEMENT  
727 FT<sup>2</sup>



MAIN FLOOR  
975 FT<sup>2</sup>



UPPER FLOOR  
1,133 FT<sup>2</sup>

HARDER HOMES LTD.  
P.O. BOX 10208  
AIRDRIE, ALBERTA T4B 0H5



WWW.HARDERHOMES.CA  
SALES@HARDERHOMES.CA  
403.912.7900