

THE MADISON B

328 COOPERSFIELD RISE

2,235 FT² TWO-STOREY FARMHOUSE

9' BASEMENT / 9' MAIN / 8' UPPER

DOUBLE GARAGE / BACK DECK

LARGE OFFICE / WALK-THROUGH PANTRY

OPEN LIVING, DINING, AND KITCHEN AREA

LARGE BONUS ROOM WITH MEDIA NICHE

VAULTED CEILING IN MAIN BEDROOM

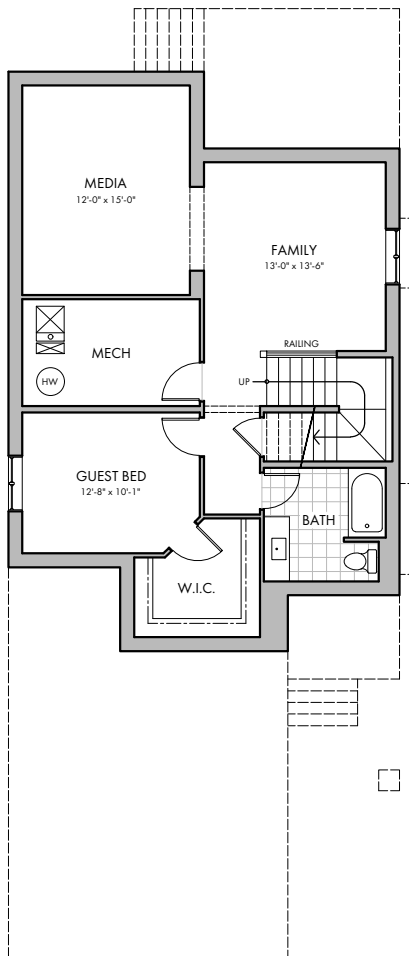
5 PIECE ENSUITE & LARGE W.I.C. / UPPER LAUNDRY

SPLIT UPPER BATHROOM / W.I.C. IN BEDROOMS

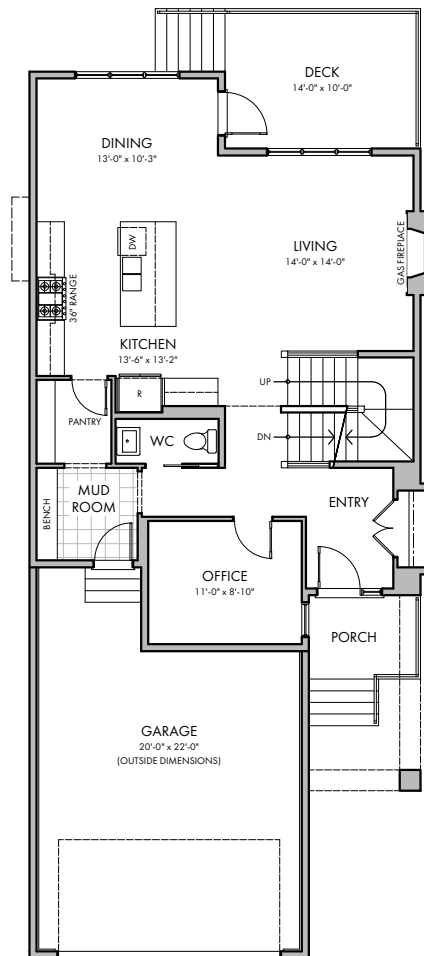
SPACIOUS BASEMENT DEVELOPMENT



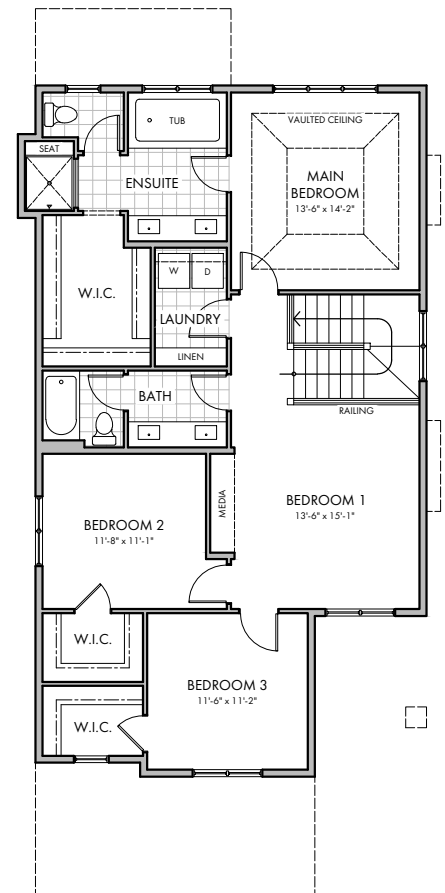
FRONT ELEVATION



BASEMENT
757 FT²



MAIN FLOOR
1,012 FT²



UPPER FLOOR
1,223 FT²

HARDER HOMES LTD.
P.O. BOX 10208
AIRDRIE, ALBERTA T4B 0H5



WWW.HARDERHOMES.CA
SALES@HARDERHOMES.CA
403.912.7900