

THE HADLEY

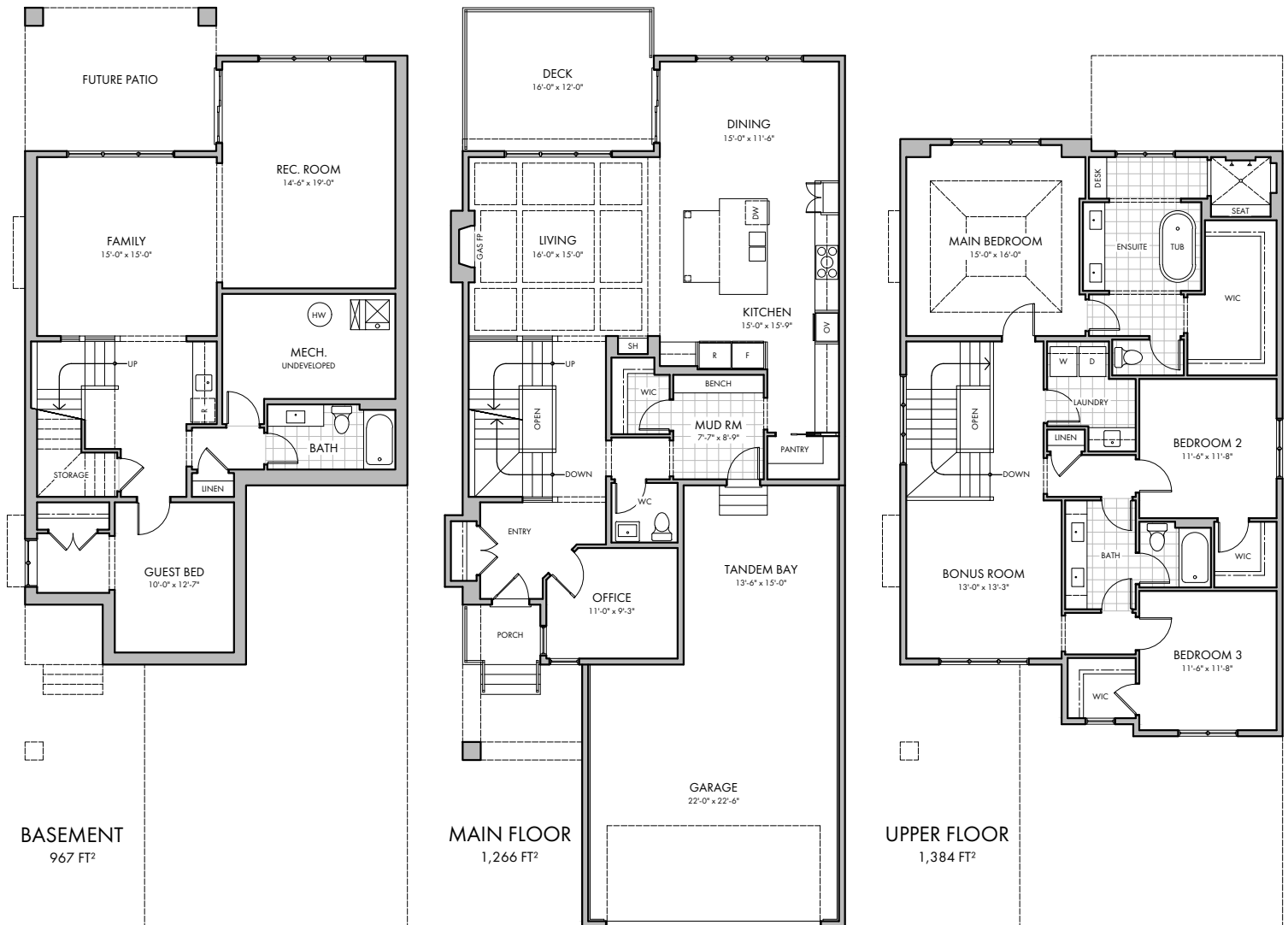
266 COOPER'S COVE

2,650 FT² TWO-STOREY FARMHOUSE
 DOUBLE GARAGE + TANDEM BAY

- 9' WALK-OUT BASEMENT / 9' MAIN / 8' UPPER
- OPEN STAIRWELL / CEILING BEAMS IN LIVING ROOM
- BUILT-IN SHELVES + CABINET IN LIVING ROOM
- OVERSIZED KITCHEN ISLAND WITH TABLE EXTENSION
- VAULTED CEILING IN MAIN BEDROOM
- BUILT-IN DESK IN ENSUITE / SINK IN UPPER LAUNDRY
- JACK-AND-JILL STYLE UPPER BATHROOM
- WET BAR IN BASEMENT



FRONT ELEVATION



HARDER HOMES LTD.
 P.O. BOX 10208
 AIRDRIE, ALBERTA T4B 0H5



WWW.HARDERHOMES.CA
 SALES@HARDERHOMES.CA
 403.912.7900