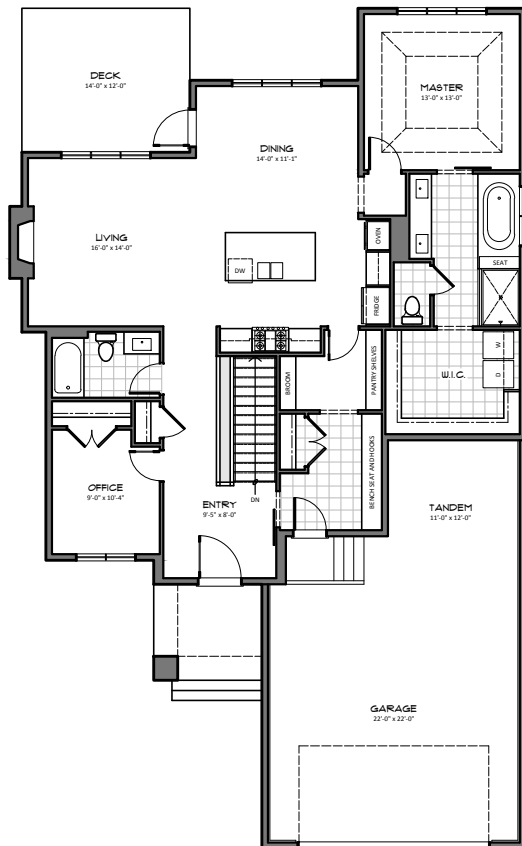


# THE SHERIDEN

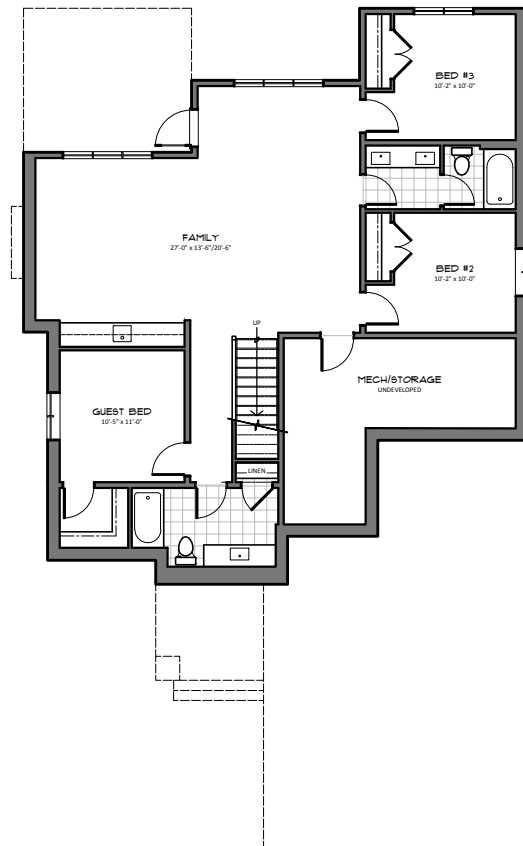
1,532 FT<sup>2</sup> SINGLE-STOREY / DOUBLE GARAGE  
 9' MAIN / 9' BASEMENT / VAULTED MASTER  
 OFFICE / REAR DECK / MUD ROOM BUILT-INS  
 5 PIECE ENSUITE WITH LAUNDRY IN W.I.C.  
 OPEN TO BELOW STAIRWELL  
 3 BEDROOMS AND 2 BATHS IN BASEMENT  
 LARGE FAMILY ROOM WITH WET BAR



FRONT ELEVATION



MAIN FLOOR  
 1,532 FT<sup>2</sup>



BASEMENT  
 1,180 FT<sup>2</sup>

HARDER HOMES LTD.  
 P.O. BOX 10208  
 AIRDRIE, ALBERTA T4B 0H5



WWW.HARDERHOMES.CA  
 SALES@HARDERHOMES.CA  
 403.912.1900