

THE CRESTWOOD 2

2,364 FT² TWO-STOREY / PRAIRIE STYLE

DOUBLE GARAGE + TANDEM BAY

9' MAIN FLOOR & BASEMENT / 8' UPPER FLOOR

TECH ROOM / FIREPLACE WITH BUILT-IN SHELVING

REAR DECK / MUD ROOM WITH BUILT-IN BENCH

4 UPSTAIRS BEDROOMS/ UPPER FLOOR LOFT

9' CEILING IN MASTER SUITE / 5 PIECE ENSUITE

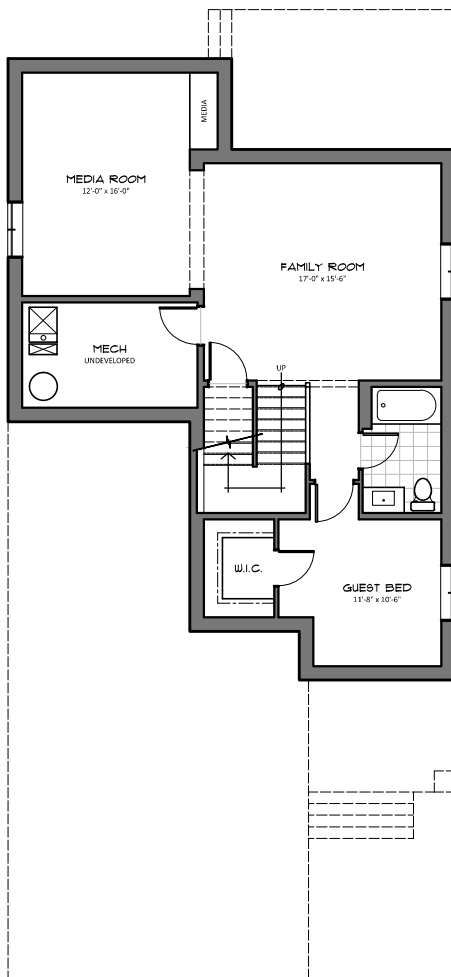
UPPER FLOOR LAUNDRY / SPLIT UPPER BATHROOM

LARGE BASEMENT FAMILY AND MEDIA ROOMS

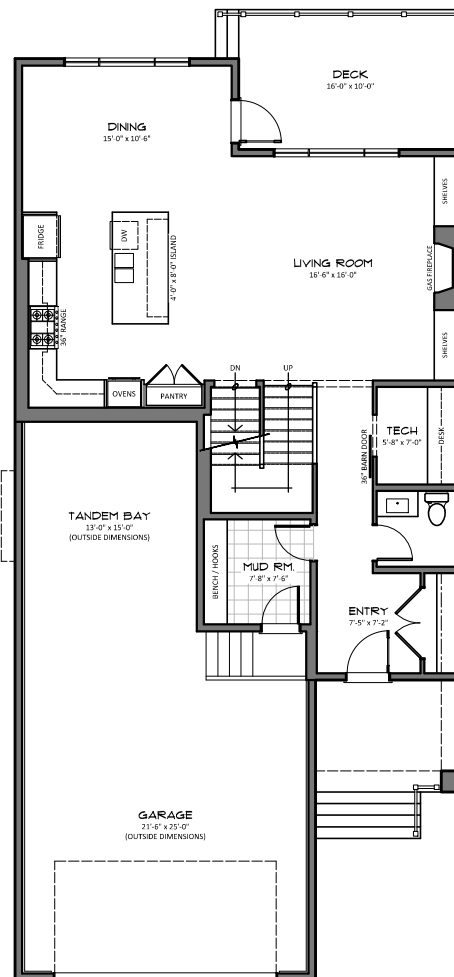
BASEMENT GUEST BEDROOM



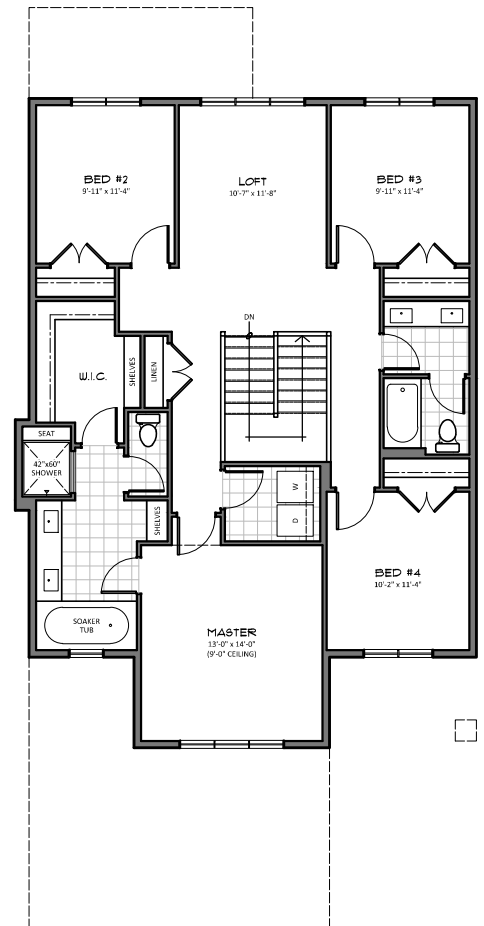
FRONT ELEVATION



BASEMENT
805 FT²



MAIN FLOOR
1,052 FT²



UPPER FLOOR
1,312 FT²

HARDER HOMES LTD.
P.O. BOX 10208
AIRDRIE, ALBERTA T4B 0H5



WWW.HARDERHOMES.CA
SALES@HARDERHOMES.CA
403.912.1900