

THE HADLEY

2,484 FT² TWO-STOREY / DOUBLE GARAGE WITH TANDEM BAY / 9' MAIN FLOOR & BASEMENT
 3 BEDROOMS / BONUS ROOM / FLEX ROOM / LARGE KITCHEN / VAULTED MASTER SUITE
 LARGE 5 PIECE ENSUITE AND W.I.C. / UPPER FLOOR LAUNDRY / OPEN TO BELOW STAIRCASE



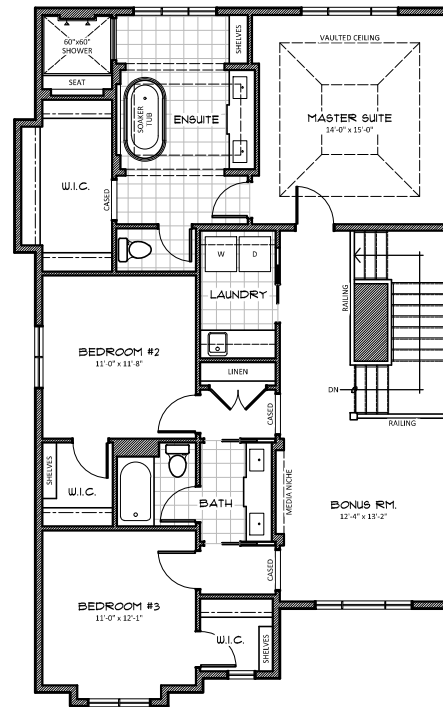
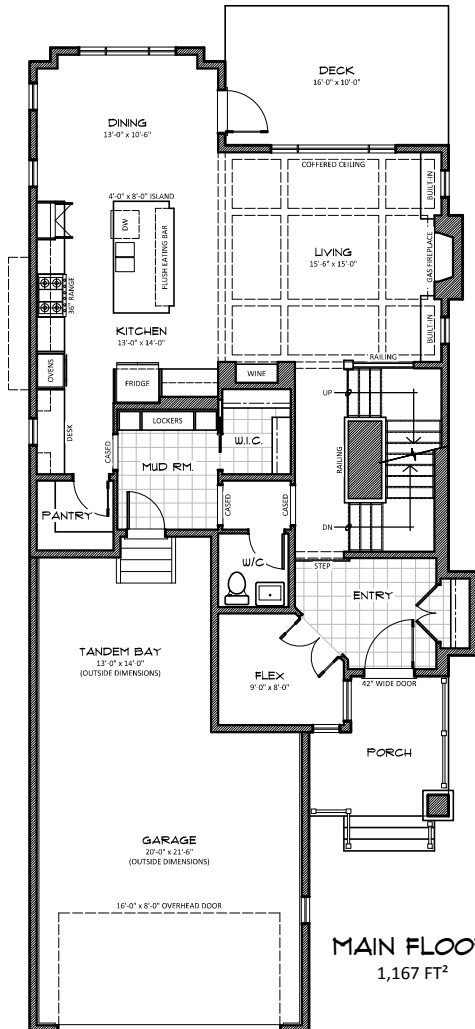
CRAFTSMAN



FRENCH COUNTRY



PRAIRIE



HARDER HOMES LTD.
 P.O. BOX 10208
 AIRDRIE, ALBERTA T4B 0H5



WWW.HARDERHOMES.CA
 SALES@HARDERHOMES.CA
 403.912.1900