

THE MADISON B

2,205 FT² TWO-STOREY / DOUBLE GARAGE / 9' MAIN FLOOR & BASEMENT
 3 BEDROOMS / BONUS ROOM / OFFICE / WALK-THRU PANTRY / VAULTED MASTER SUITE
 5 PIECE ENSUITE / UPPER FLOOR LAUNDRY / DOUBLE VANITY IN FULL BATH / W.I.C. CLOSETS



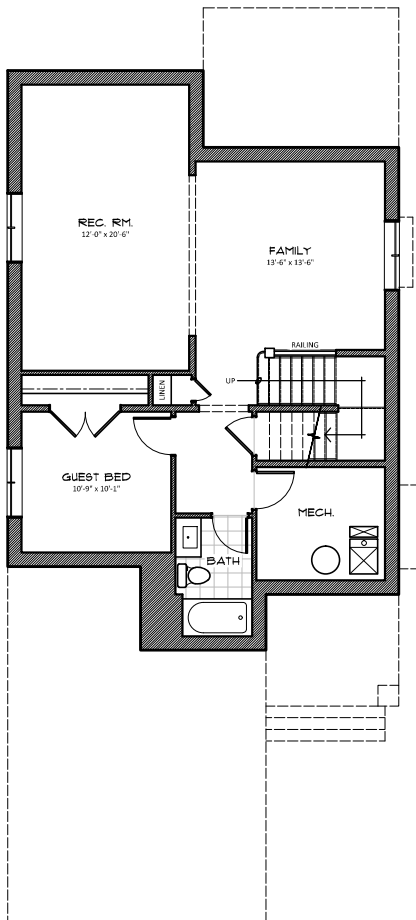
TUDOR



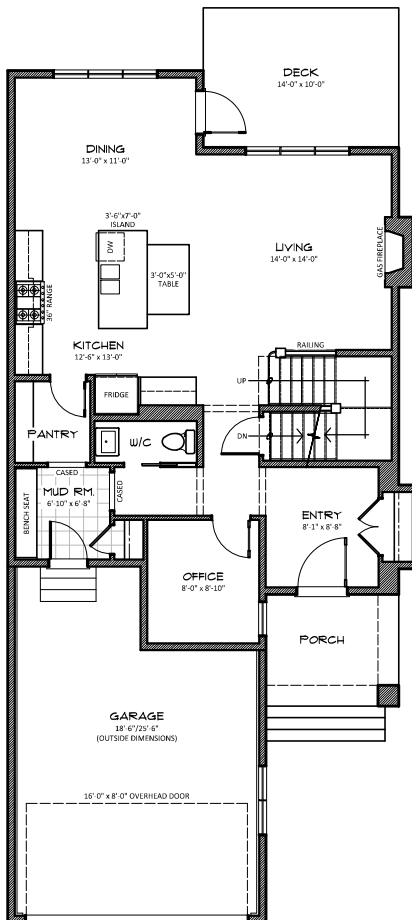
FRENCH COUNTRY



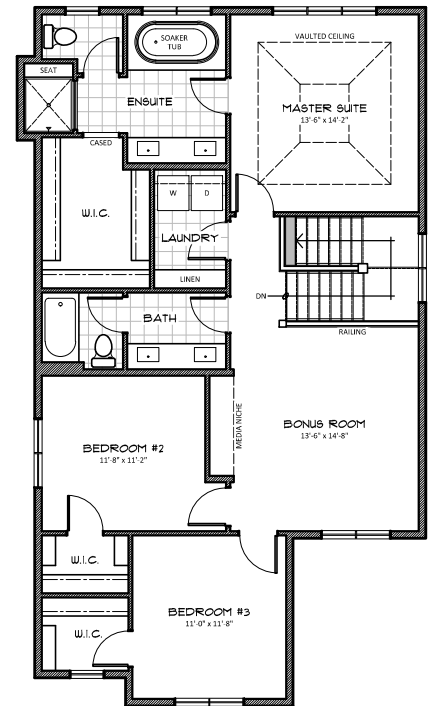
CRAFTSMAN



BASEMENT
770 FT²



MAIN FLOOR
999 FT²



UPPER FLOOR
1,206 FT²

HARDER HOMES LTD.
 P.O. BOX 10208
 AIRDRIE, ALBERTA T4B 0H5



WWW.HARDERHOMES.CA
 SALES@HARDERHOMES.CA
 403.912.1900