

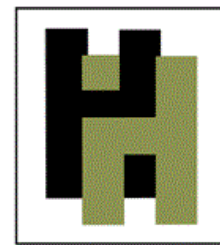
'THE OSBORN'

1,750 sq. ft

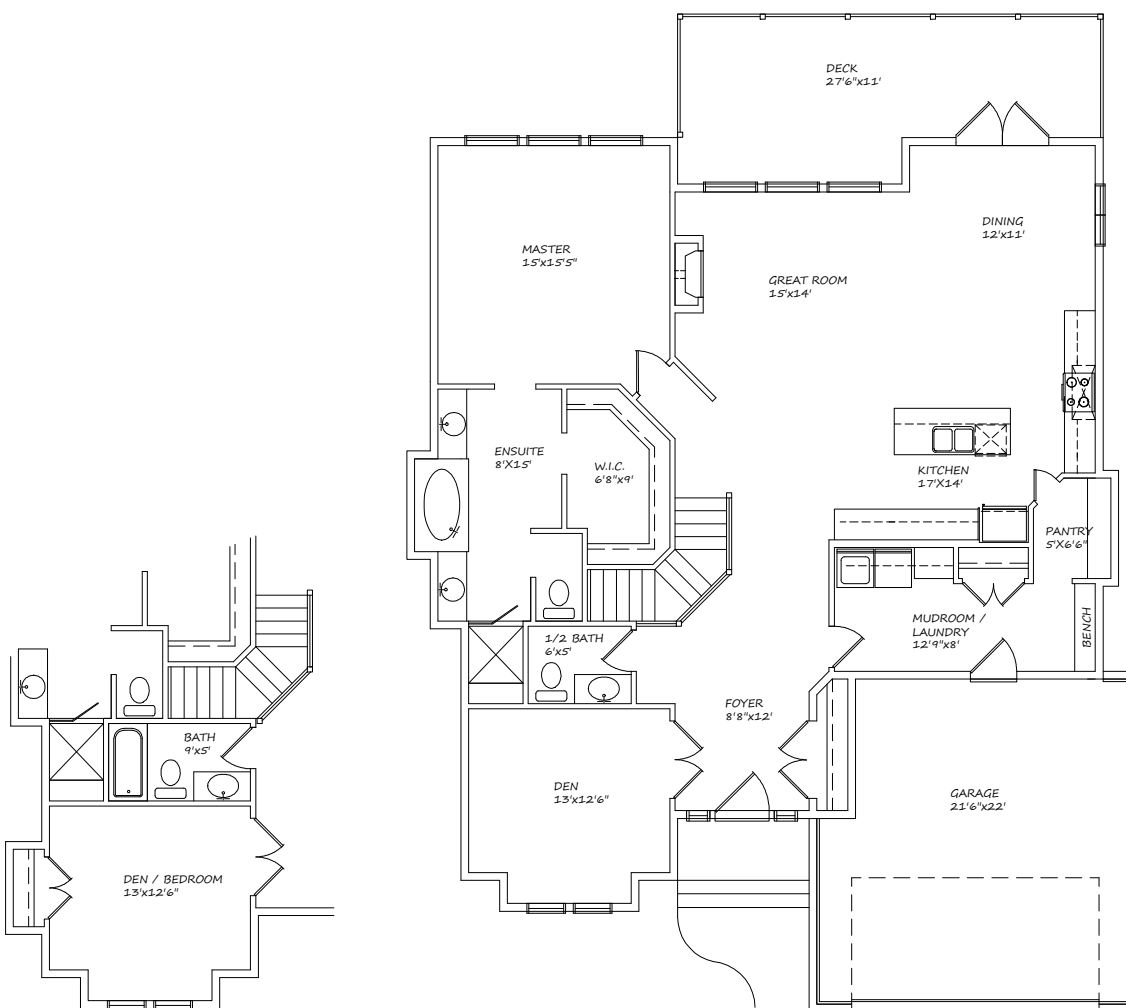
1 bedroom, 1.5 baths

Features

- Oversized Den that doubles as 2nd bedroom
- Open floor concept perfect for entertaining
- Large master retreat and spacious ensuite and walk in closet
- Functional walk-through mudroom and pantry
- Choice of elevations



HARDER HOMES LTD.



OPTIONAL LAYOUT

MAIN FLOOR
1750 Sq.Ft

WWW.HARDERHOMES.CA

Harder Homes Ltd. | P.O. Box 10208 | Airdrie, Alberta | T4B 0H5 | 403-912-7900 | sales@harderhomes.ca

Copyright © 2013 Harder Homes Ltd. All rights Reserved