

'THE MCKINLEY'

3,140 sq. ft

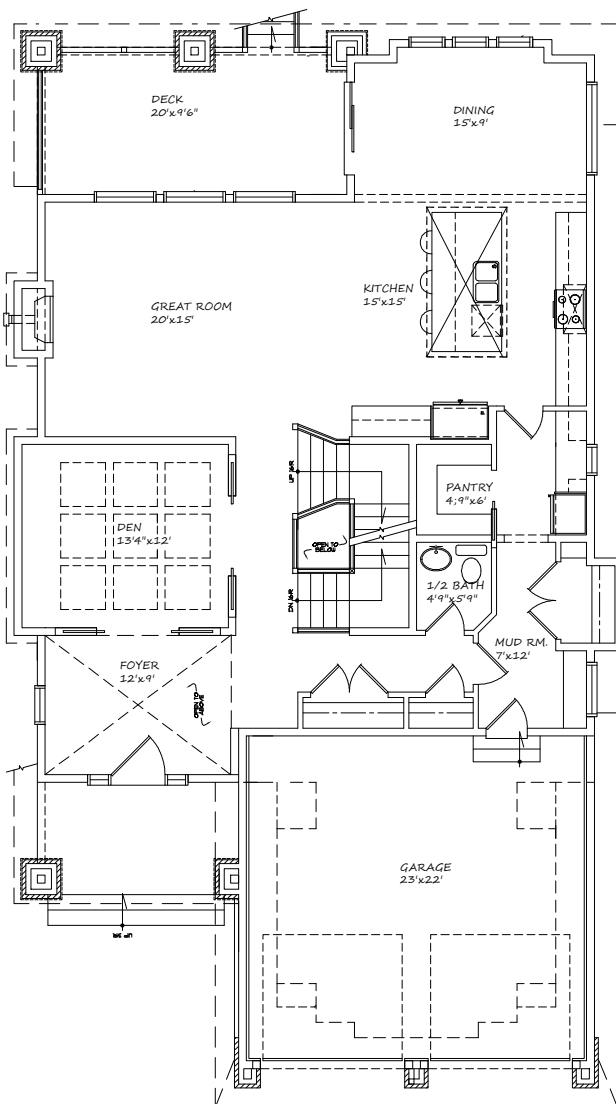
3 bedroom, 2.5 baths

Features

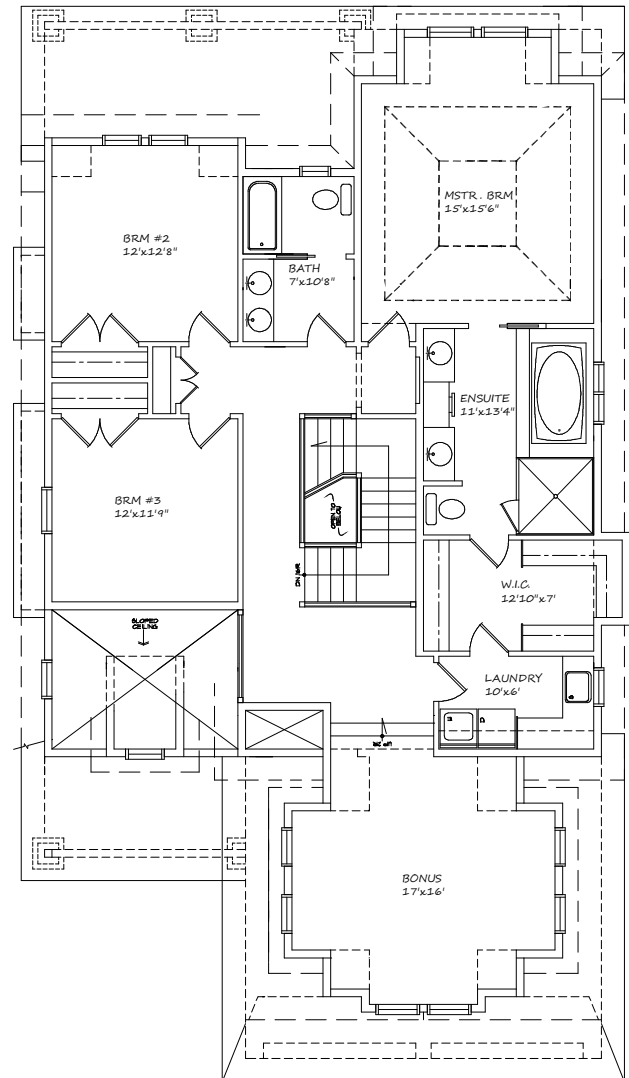
- Executive kitchen, butlers pantry and large island perfect for entertaining
- Beautiful open to below central staircase
- Upper level laundry with convenient master ensuite access
- Huge master retreat with luxurious ensuite
- Choice of Craftsman, Tudor or Prairie elevation
- Optional 4 bedroom plan
- 3 Car garage option on select lots



HARDER HOMES LTD.



MAIN FLOOR
1493 Sq.Ft



UPPER FLOOR
1647 Sq.Ft

WWW.HARDERHOMES.CA

Harder Homes Ltd. | P.O. Box 10208 | Airdrie, Alberta | T4B 0H5 | 403-912-7900 | sales@harderhomes.ca

Copyright © 2013 Harder Homes Ltd. All rights Reserved