

'THE MONTERAY II'

2,824 sq. ft

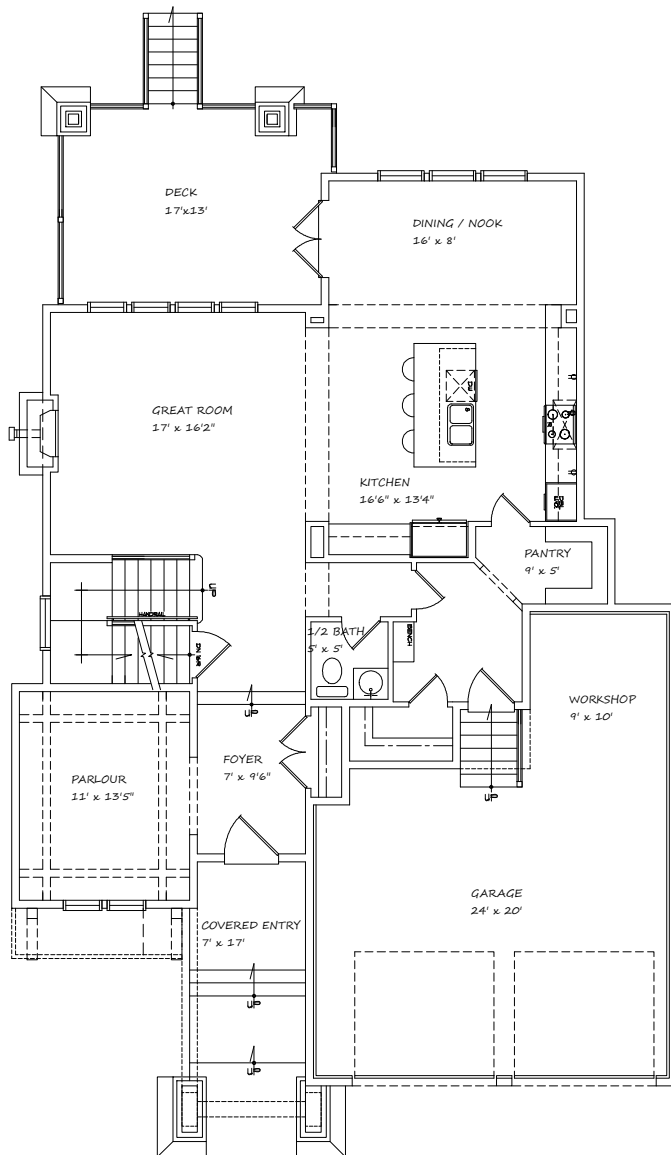
4 bedroom, 2.5 baths

Features

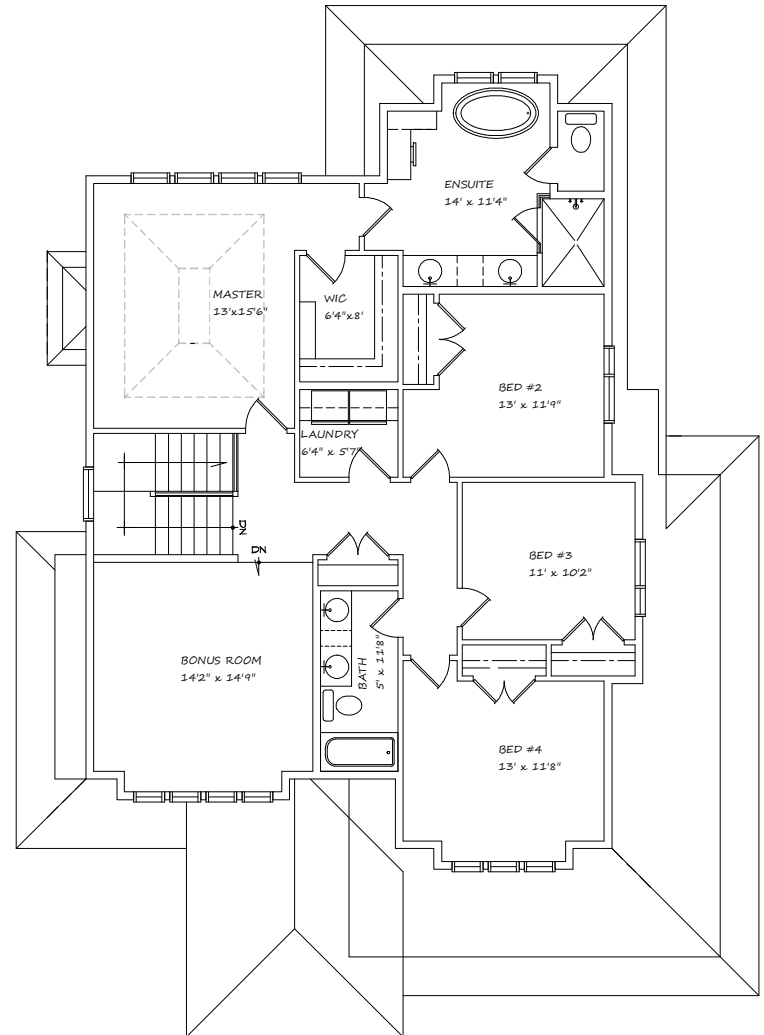
- Large main floor flex room perfect for office, den or formal dining room
- Oversized executive kitchen & nook, great for entertaining
- Three spacious secondary bedrooms
- Large tandem style 3 car garage
- Choice of Tudor, Prairie or Craftsman front elevation



HARDER HOMES LTD.



MAIN FLOOR
1331 Sq.Ft



UPPER FLOOR
1493 Sq.Ft

WWW.HARDERHOMES.CA

Harder Homes Ltd. | P.O. Box 10208 | Airdrie, Alberta | T4B 0H5 | 403-912-7900 | sales@harderhomes.ca

Copyright © 2013 Harder Homes Ltd. All rights Reserved