

# 'THE LINCOLN'

3,172 sq. ft

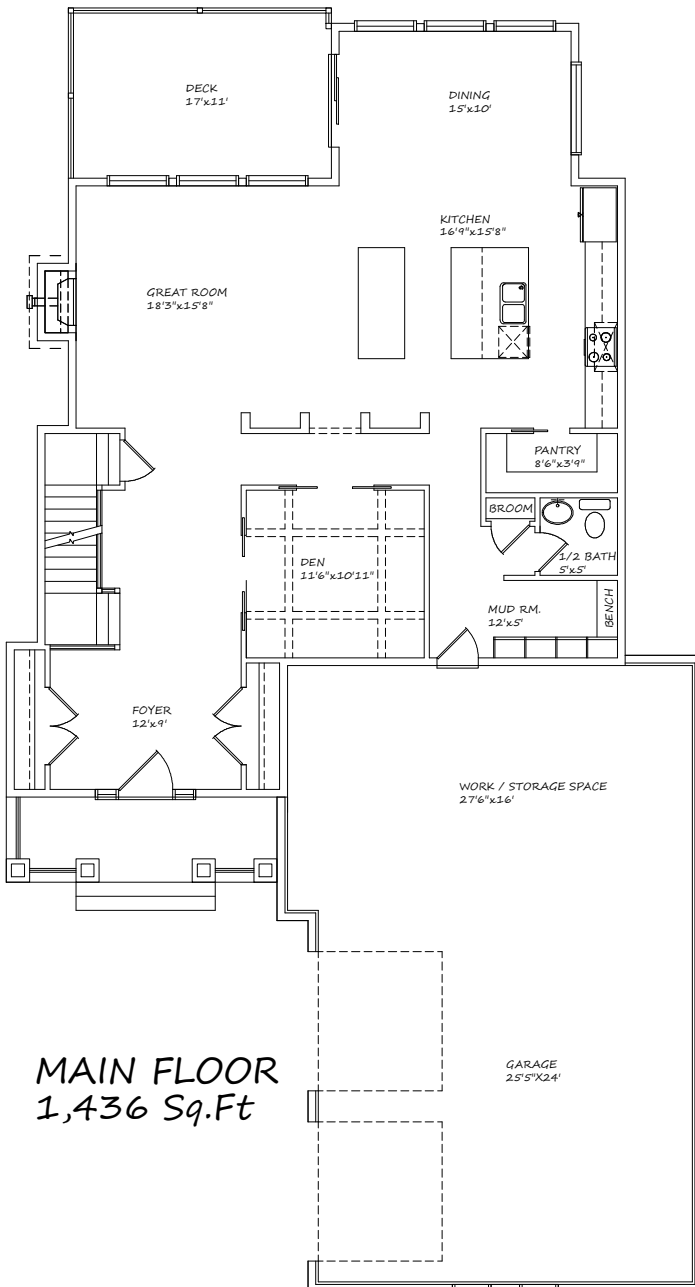
4 bedroom, 2.5 baths

### Features

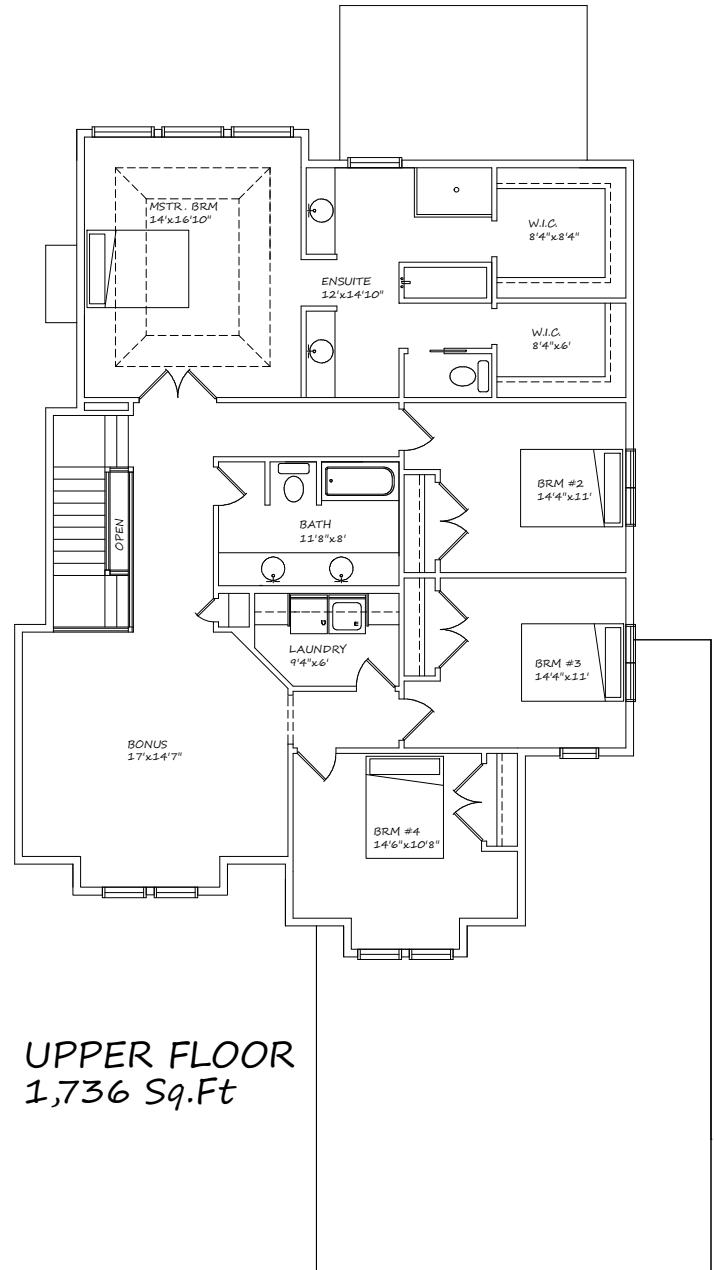
- Large 4 bedroom plus bonus room on upper floor
- Executive kitchen with dual islands perfect for family gatherings
- Spacious master with spa-like ensuite, His and Hers walk-in closets
- Huge three car side garage
- Choice of Tudor, Prairie or Craftsman front elevation



HARDER HOMES LTD.



**MAIN FLOOR**  
1,436 Sq.Ft



**UPPER FLOOR**  
1,736 Sq.Ft

[WWW.HARDERHOMES.CA](http://WWW.HARDERHOMES.CA)

Harder Homes Ltd. | P.O. Box 10208 | Airdrie, Alberta | T4B 0H5 | 403-912-7900 | [sales@harderhomes.ca](mailto:sales@harderhomes.ca)

Copyright © 2013 Harder Homes Ltd. All rights Reserved