

'THE BELLEVIEW II'

2,993 sq. ft

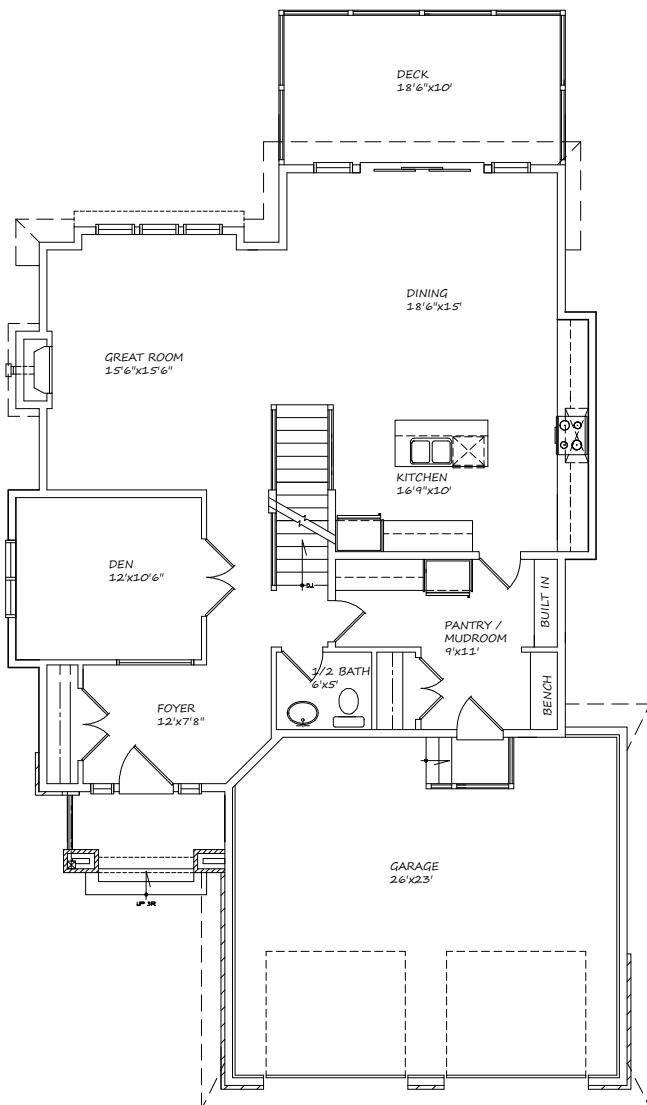
4 bedroom, 2.5 baths

Features

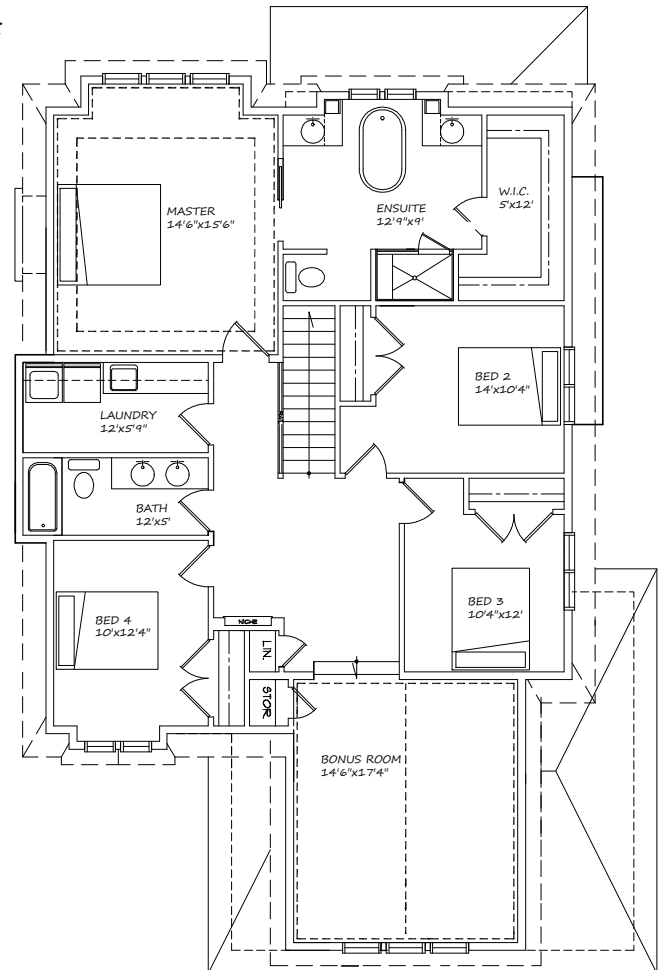
- Open floor concept perfect for entertaining
- Spacious mudroom / walk-thru pantry, use as second kitchen
- Huge master retreat, ensuite & walk-in closet
- Possible 3 car garage option
- Choice of Tudor, Prairie or Craftsman front elevation



HARDER HOMES LTD.



MAIN FLOOR
1,385 Sq.Ft



UPPER FLOOR
1,608 Sq.Ft.

WWW.HARDERHOMES.CA

Harder Homes Ltd. | P.O. Box 10208 | Airdrie, Alberta | T4B 0H5 | 403-912-7900 | sales@harderhomes.ca

Copyright © 2013 Harder Homes Ltd. All rights Reserved