

# 'THE BELLEVIEW'

2,584 sq. ft

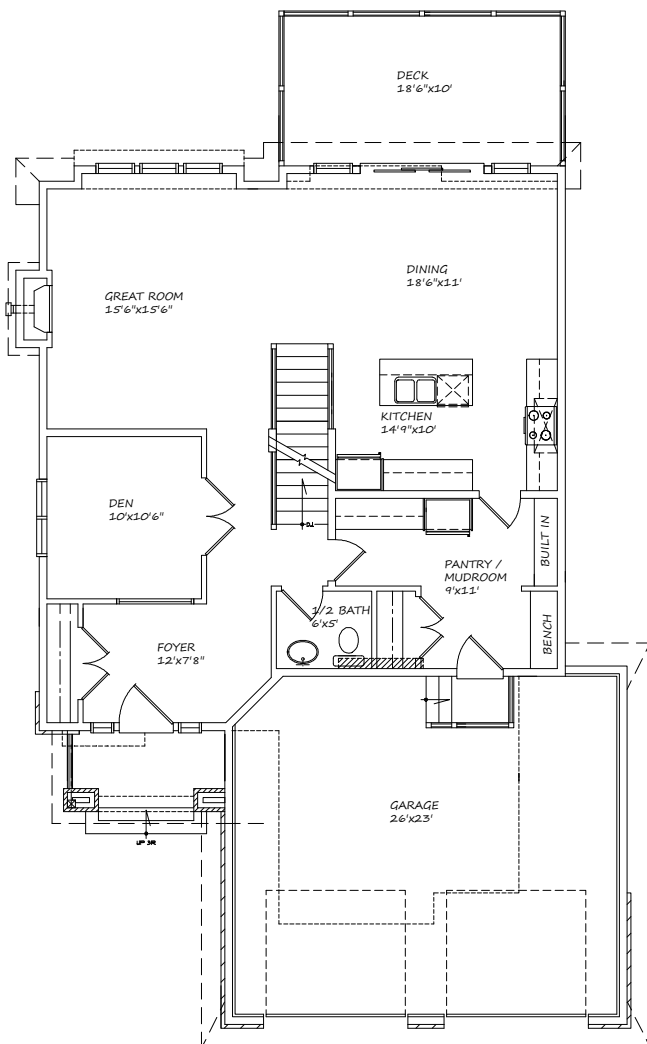
3 bedroom, 2.5 baths

## Features

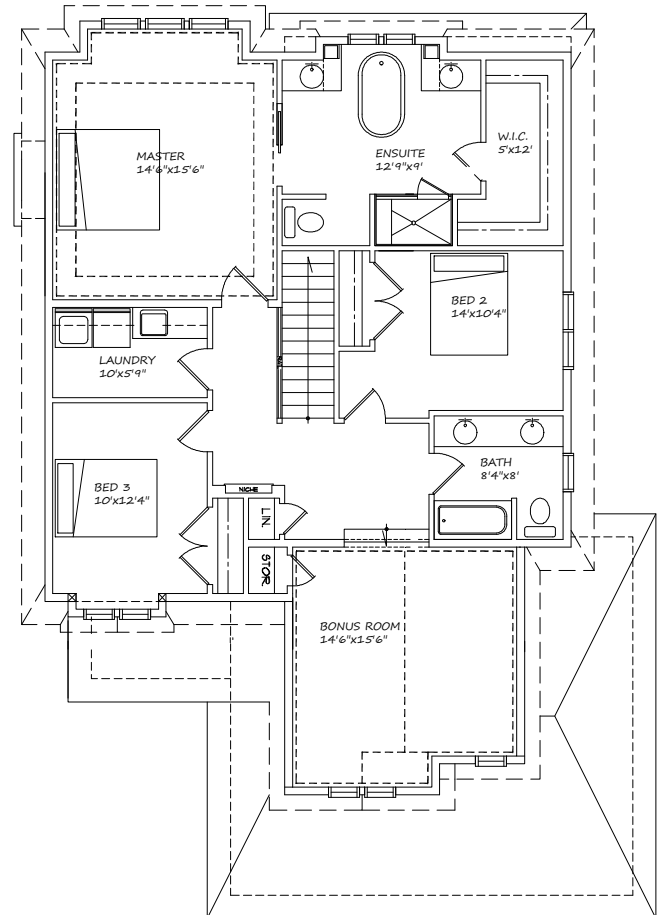
- Huge master retreat, ensuite & walk-in closet
- Open floor concept perfect for entertaining
- Spacious mudroom / walk-thru pantry, use as second kitchen
- Possible 3 car garage option
- Choice of Tudor, Prairie or Craftsman front elevation



HARDER HOMES LTD.



MAIN FLOOR  
1174 Sq.Ft



UPPER FLOOR  
1410 Sq.Ft.

[WWW.HARDERHOMES.CA](http://WWW.HARDERHOMES.CA)

Harder Homes Ltd. | P.O. Box 10208 | Airdrie, Alberta | T4B 0H5 | 403-912-7900 | [sales@harderhomes.ca](mailto:sales@harderhomes.ca)

Copyright © 2013 Harder Homes Ltd. All rights Reserved